



STARLIGHT

LUCERNE

TABLE OF CONTENT

1	Check In - WI-FI
2 - 6	Directions & Key Collection
7 - 11	Detailed Usage Guide
12	Starlight Lucerne Reminders
13	Before You Go

CHECK IN - CHECK OUT - WI-FI



Check In Time:
After 14:00

Early check-in may be
available upon request.

Check Out Time:
By 10am

Late check-out may be
available upon request

WI-FI

WLAN: BRANDEIS
Password:bwealth1777!

DIRECTIONS & KEY COLLECTION

Directions Starlight Loft – Seidenhofstrasse 1, 6003 Luzern

(First check-in is from the back entrance. After that, you may use the main entrance on Seidenhofstrasse 1.)

From Luzern Main Station → Key Pick-Up (Floraweg 2)

- From Luzern Main Station (Bahnhof), walk about 3 minutes to Floraweg 2.
 - At Floraweg 2, you will see a parking garage entrance. This is where you will collect your key.
-

KEY COLLECTION

At the parking entrance, on the left side, you will see two lockboxes fixed on the concrete wall.

- Your lockbox is the right one.



- Pull down the small black flap to open the lockbox.
- Once you enter the code, pull down the small black side-click to open the lockbox.
- Enter the code: 1777
- Open the box and take the key.
- Please close the lockbox again.



Right next to the lockbox, you'll see a black digital reader with a green light.

- Hold the key's chip close to the green square. The door will open automatically. (During the day, the garage door may already be open.)



KEY COLLECTION

- Walk straight in and continue until the end of the garage.



- On the left side, you will see a red elevator



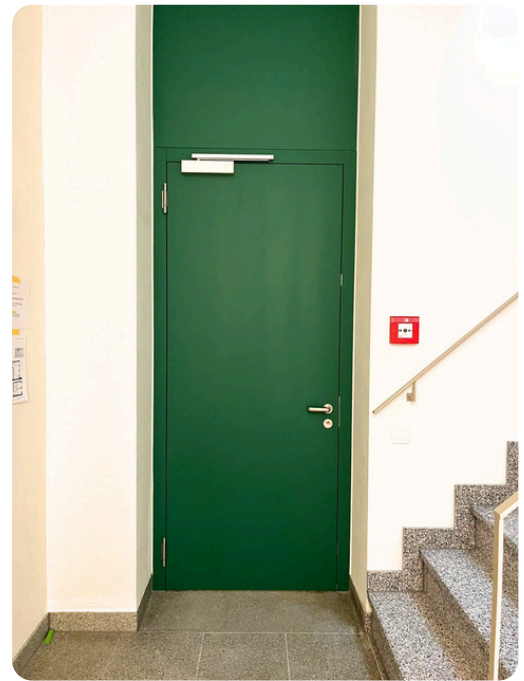
- Pass the key again on the green reader next to the elevator.
- Press the elevator button.
- Go to the 3rd floor.



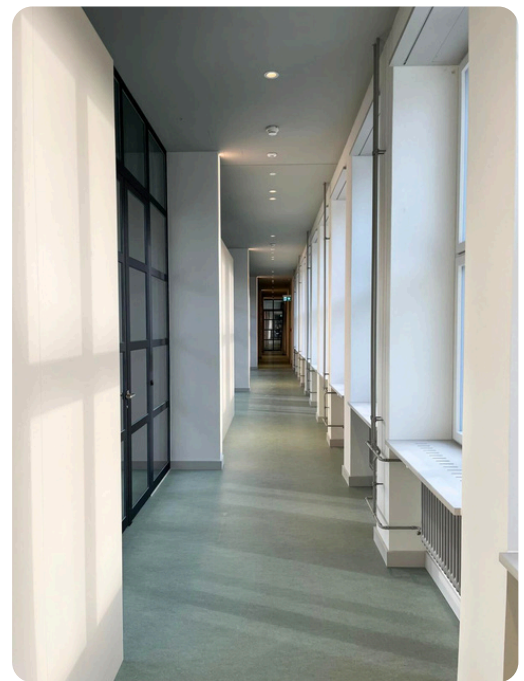
KEY COLLECTION

Arrival on the 3rd Floor

- As soon as you step out, look to your right.
- You will see a green door. This door does not require a key.



- Walk straight through the hallway until you reach loft 3



- You have arrived

Welcome to Starlight Lucerne



KEY COLLECTION

Main Entrance (After Check-In)

Once you have the key, you can always enter through the main entrance as well:

Seidenhofstrasse 1

- Hold the key's chip close to the green light square. The door will open automatically.

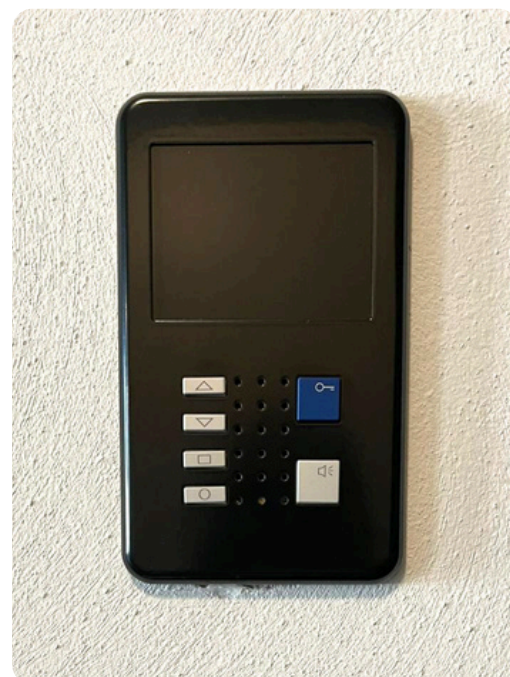


DETAILED GUIDE USAGE

Main Entrance Door & Intercom

This panel is your intercom and door opener for the main building.

- When someone rings the bell at the main entrance, you will see or hear it here.
- To speak with them, press the speaker button.
- To open the door for them, press the blue key button.

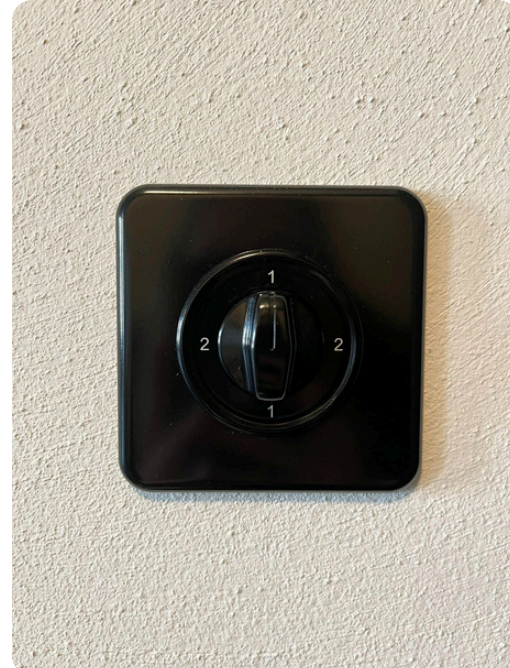


At the main entrance, the doorbell is listed under: **Brandeis Wealth**

Ventilation Control

This switch controls the ventilation of the loft.

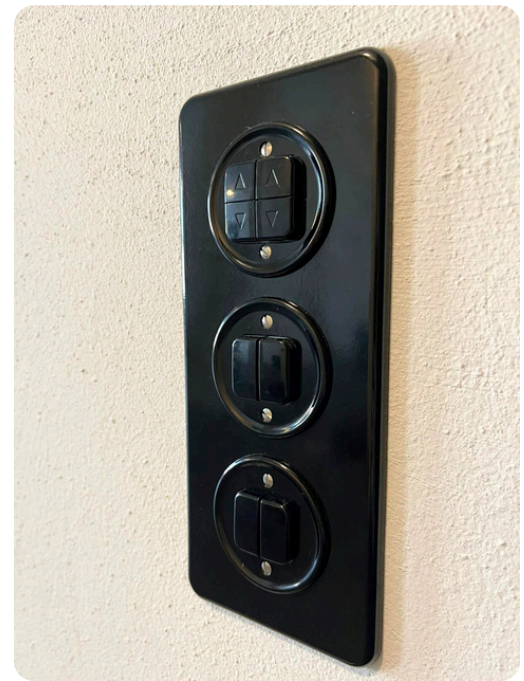
- Position 1:
- Gentle, regular airflow – ideal for keeping the loft comfortable without cooling it too much. (Please keep it mostly on 1 if possible)
- Position 2:
- Stronger ventilation – use this if you feel the space needs more fresh air.



DETAILED GUIDE USAGE

About the Black Control Panel

- Top buttons (with the arrows ↑ ↓):
These control the window blinds.
- Press the up arrow to open them and let the light in.
- Press the down arrow to close them and darken the room.



The two switches below:

- These are the light switches for the room.
-

DETAILED GUIDE USAGE

Washing Machine & Dryer

Both machines are very easy to use.

Washer (bottom machine)

1. Load your laundry.
2. Please make sure to close the door firmly – it needs a strong pressing so it locks properly and the cycle can start.
3. Press the power button.
4. Choose the program you prefer (e.g., Eco 40–60, 30° Cotton, etc.).
5. Press start.

Dryer (top machine)

1. Press the power button.
2. Select the drying program you need (Extra Dry, Cabinet Dry, Light Dry, etc.).
3. Press start.

If you ever have a question or something feels unclear, please don't hesitate to reach out to me. I'm always here to help.



DETAILED GUIDE USAGE

Bathroom Essentials

Inside the bathroom closet, you will find everything prepared for your comfort:

- a floor rug,
- medium towels,
- toilet paper,
- and a hair dryer.



Kitchen Essentials

In the kitchen drawers and cupboards, you will find:

- plates and bowls,
- basic pots, pans, and
- essential cooking items such as a cutting board and napkins.



Kitchen Essentials

In the kitchen drawers and cupboards, you will find:

- plates and bowls,
- basic pots, pans, and
- essential cooking items such as a cutting board and napkins.



DETAILED GUIDE USAGE

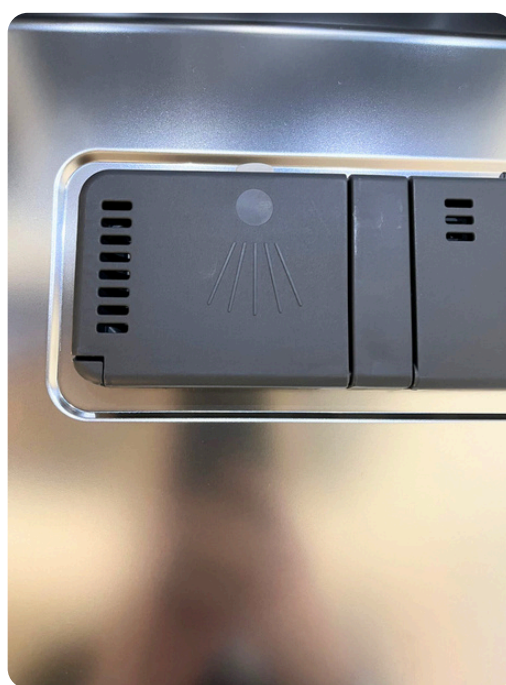
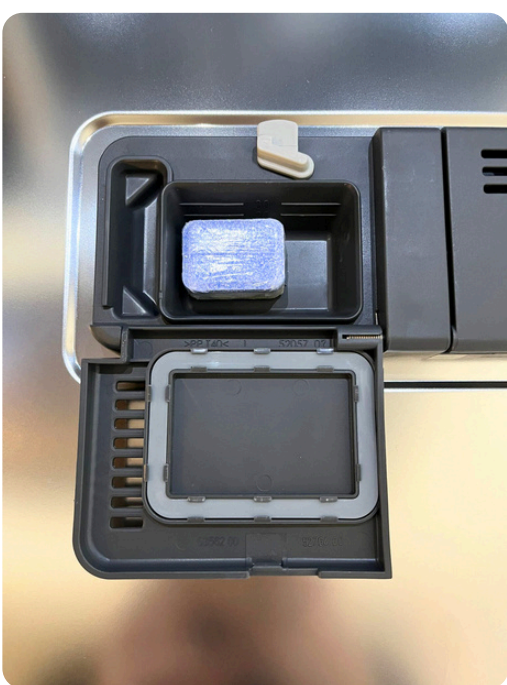
Dishwasher & Cleaning Products

Behind the trash bin in the kitchen, you will find dish soap, cleaning products, and dishwasher tablets.



Using the Dishwasher

- Open the dishwasher and place one tablet into the small compartment on the inside of the door.
- Close the compartment until it clicks.
- Choose the washing program you prefer on the display.
- Close the dishwasher door and let it run.



STARLIGHT LUCERNE REMINDERS



The Starlight Loft is a private and peaceful stay, created for calm guests who value a serene environment.

We kindly ask for your respect toward the building and the neighbors.

- No parties are allowed
- Please keep noise to a minimum at night
- Treat the space with care, as if it were your own

Thank you for helping us preserve the tranquility and beauty of this special place.

BEFORE YOU GO & CHECK OUT



Before You Go

Before leaving the loft, please take a moment to check the following:

- Make sure all lights are turned off.
- Ensure the cooking plates are completely off.
- Close all windows and leave the space as peacefully as you found it.

Check-Out

Please return the key to the same lockbox where you picked it up. Place the key inside, close the cover well, and make sure the box is securely locked.